

International Day for Biological Diversity – 22 May 2023

Paths towards globally fair biodiversity conservation – implementing the new framework inclusively

Panel discussion

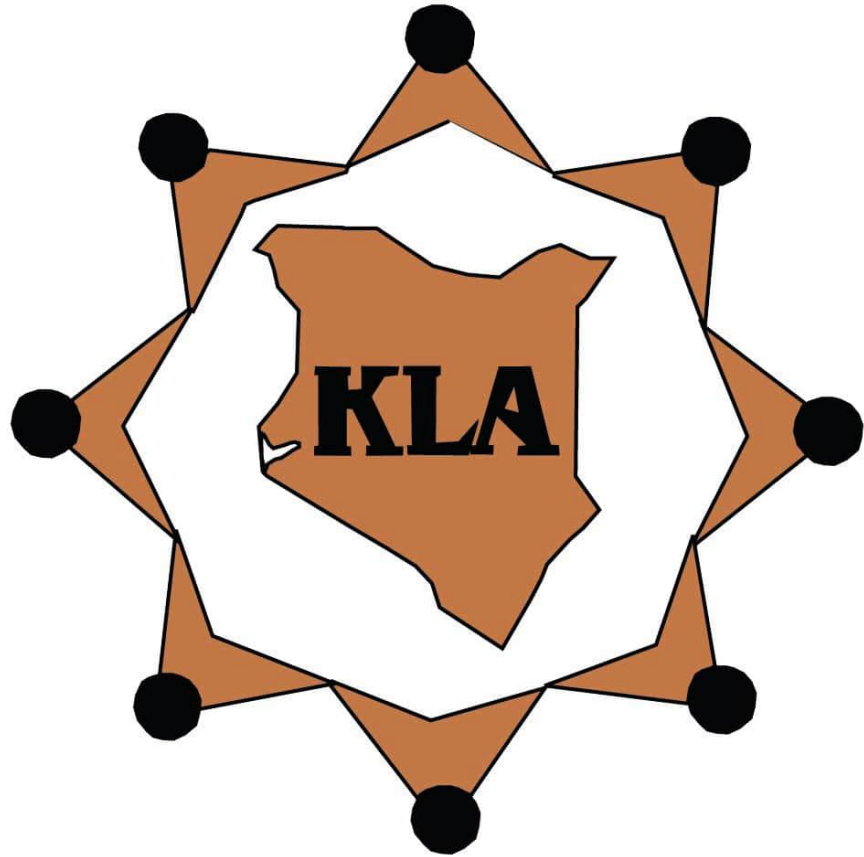
How to integrate different identities and worldviews with conservation measures as well as participatory approaches that emphasise gender equality?

Panelists

- **Faith Alubbe**, CEO, Kenya Land Alliance (KLA)
- **Ana Osuna Orozco**, Head of Programmes, Rainforest Foundation UK (RFUK)
- **Roberto Maldonado**, South America expert, WWF
- **Yon Fernandez de Larrinoa**, Team Leader of the FAO Indigenous Peoples Uni

Moderation:

- **Dr. Jes Weigelt**, TMG Research gGmbH



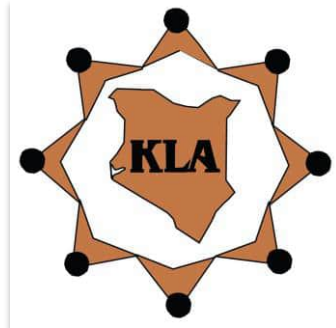
About Kenya Land Alliance

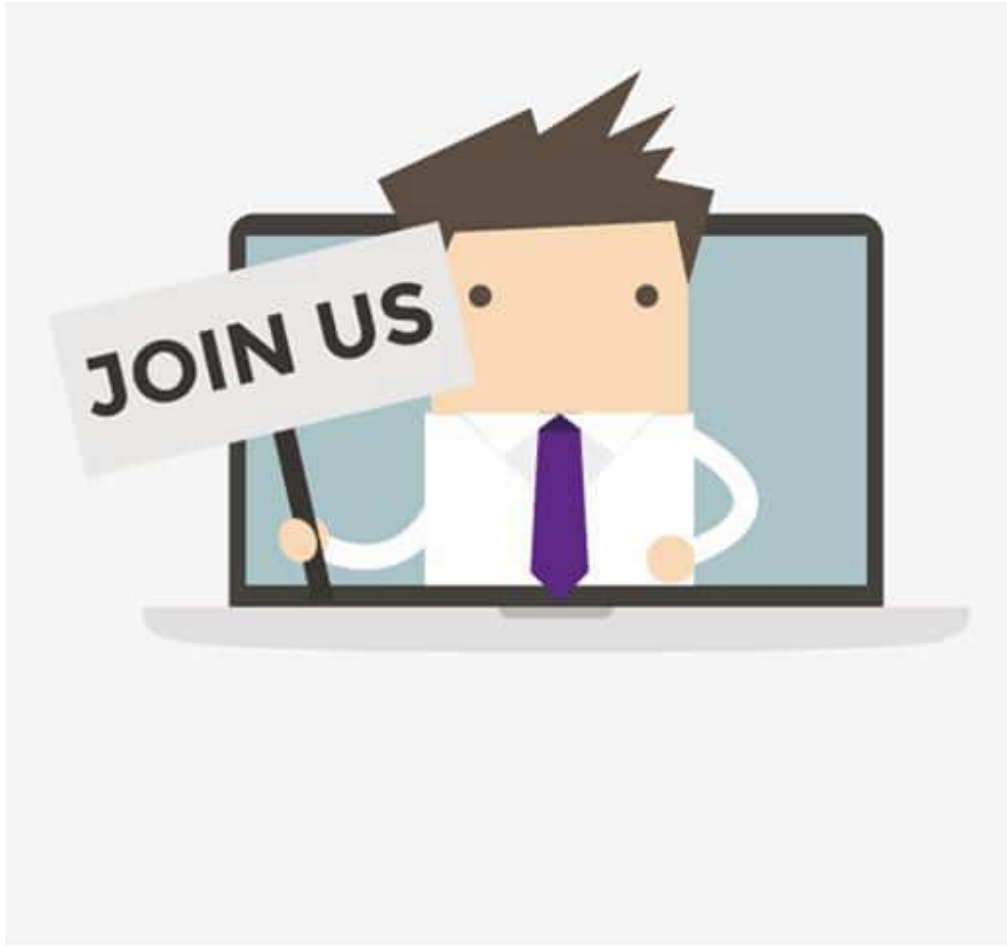
.....a synopsis

Kenya Land Alliance

The Kenya Land Alliance (KLA) is an umbrella network of Civil Society Organizations and Individuals committed to effectively championing for the reforms of policies and laws governing land, environment and natural resources in Kenya.

KLA was founded in 1999 as a membership not-for-profit and non-partisan network and got registered in November 2000 by the government of Kenya as a Trust. In Compliance with the new Public Benefits Organisation Act, 2013 KLA was re-registered as an NGO in July, 2013. It's current membership comprises of 27 Non-Governmental Organizations, 31 Community Based Organizations and 32 Individuals





Item	Amount (Ksh)
Individual Member	2000 PA
Local Non Governmental Organisation (NGO)	5000 PA
Community Based Organization (CBO)	2500 PA
International Non Governmental Organisation (NGO)	10,000 PA



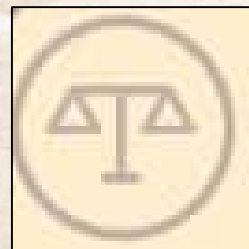
Organisational Strategic Objectives

- 1: To support social movement of land marginalized groups
- 2: To advocate for a democratic framework for management of community land
- 3: To promote secure and equitable land rights
- 4: To research, document and disseminate information about land
- 5: To enhance KLA's membership and institutional systems

Organisational Key Result Areas

- 1 Active agency of land marginalized groups built
- 2 Strengthened land governance
- 3 Knowledge driven interventions in the land sector
- 4 A robust and sustainable KLA

Target Groups



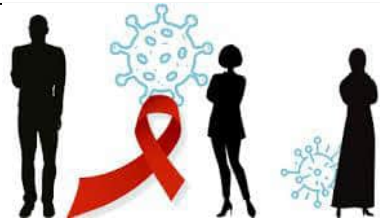
Kenya Land Alliance

- International Non Governmental Organisations
- National Non Governmental Organisations
- Community Based Organisations.
- Individuals members :
 - Members of the Academia.
 - Governmental officials or private sector practitioners.



Our membership

Membership Composition



KRA 1: Active Agency of Land Marginalized Groups Built

- Structured community (including journalists) discussion with county government on community land and ongoing irregular sale
- Strategic policy dialogues with the County Government of Narok to debate on the domestication of Charcoal Regulations policy, 2019.
- Establishment of local community agencies of marginalized groups in Turkana county specifically in the Lokichar south Oil basin in 12 communities/ Villages in Turkana East and South. Now the formed community cells can now demand for more inclusion in the management of their land and natural resources as a unit.



KRA 1: Active Agency of Land Marginalized Groups Built



KRA 2: Strengthened Land Governance

To achieve this KRA KLA has undertaken the following interventions :



KLA Ministry of Lands officials from Turkana County on the the Community Land Act, 2015

KRA 2: Strengthened Land Governance



SPEAKERS

Clinton Omusula
Global Land Tool Network
UN-Habitat

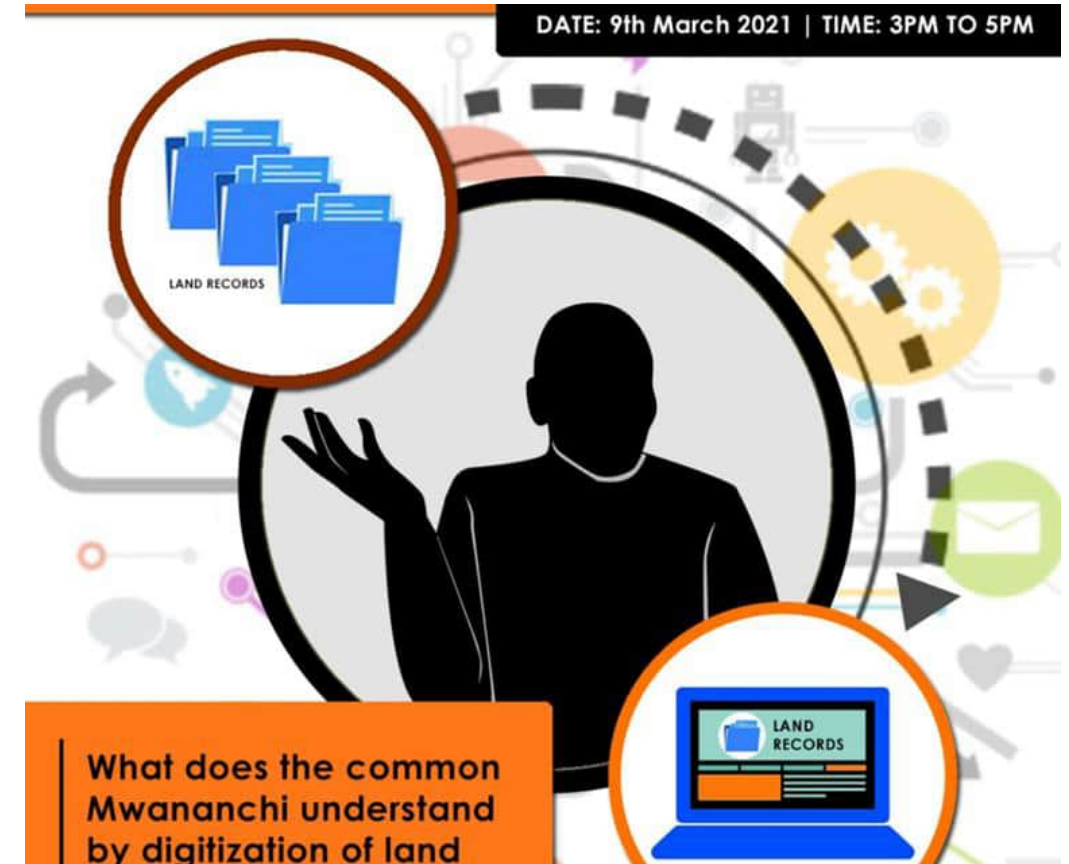
Dr. Rose Kitur
National Land Commission

Elijah Desmond Lempalra
IMPACT Kenya

Dann Mwangi
Journalist (Editor and Anchor)

MODERATOR

The graphic features a central background image of a green field with a path. Four circular portraits of the speakers and moderator are arranged around the center. Each portrait is connected to a brown rectangular box containing their name and affiliation. The word 'SPEAKERS' is in a brown box at the top, and 'MODERATOR' is in a brown box at the bottom.



DATE: 9th March 2021 | TIME: 3PM TO 5PM

LAND RECORDS

What does the common Mwananchi understand by digitization of land

The graphic features a central silhouette of a person gesturing. Surrounding the silhouette are various icons: a folder labeled 'LAND RECORDS', a laptop labeled 'LAND RECORDS', a gear, a globe, and a speech bubble. The background is white with orange and grey accents. The date and time are in a black box at the top right. The title 'What does the common Mwananchi understand by digitization of land' is in an orange box at the bottom left.

In both the twitter chat and webinar policy makers were able to participate and 27 participants were able to interact with the policy makers in the created virtual platforms, the idea to annually highlight the violations women face while pursuing their rights to Land and Natural resources.

KRA 2: Strengthened Land Governance

- KLA has worked with Communities in Nguluku and Kibwaga in Kwale to create local agencies through community led social maps (social cartography), capacity building and IECs. These maps empower the Communities to know where their Land Boundaries are and how to audit the ongoing Land Grabs.
- KLA established a strong partnership with the County of Turkana, especially with the Committee overseeing Land and Natural Resources in the County. We convened joint capacity building forums with an aim of strengthening their capacity to make better policies in regards to the ongoing oil and gas harvesting. So afar, the County has continued to look upon KLA as a resource organization.
- The recently formed Working group on implementation of the Community Land Act (WGICLA) used KLA's IEC materials to prepare a curricular for the roll out of the registration of Community Lands. Although 24 Counties have been earmarked as Counties of interest; only 9 Counties have been earmarked as pilots.



#NewNormal

**TOWARDS A RESPONSIVE
OIL & GAS SECTOR IN KENYA**

**Your
WORLD**

Tuesday
9TH Mar. 2021
7am - 9am

VICTOR KIPROP
HOST

FAITH ALUBBE
CEO - KENYA LAND ALLIANCE

**WATCH ANYTIME,
ANYWHERE.**

STREAM & WATCH NTV NEWS AND SHOWS within
the Nation News App and on social media platforms.

f LIVE YouTube

KRA 2; Strengthened land governance



Women journalist training on land governance processes .

KRA 2 : Strengthened Land Governance



KLA staff and donor from Oxfam paying courtesy call to the office of the county secretary in charge of mining and water.

KRA 2 : Strengthened Land Governance



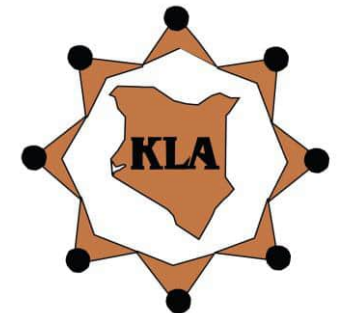
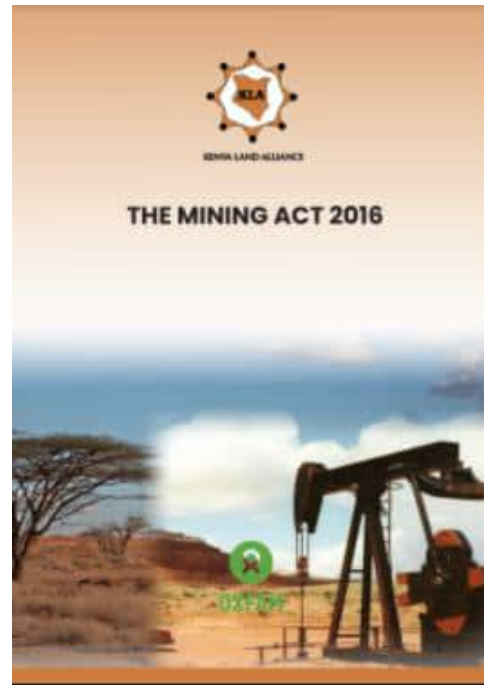
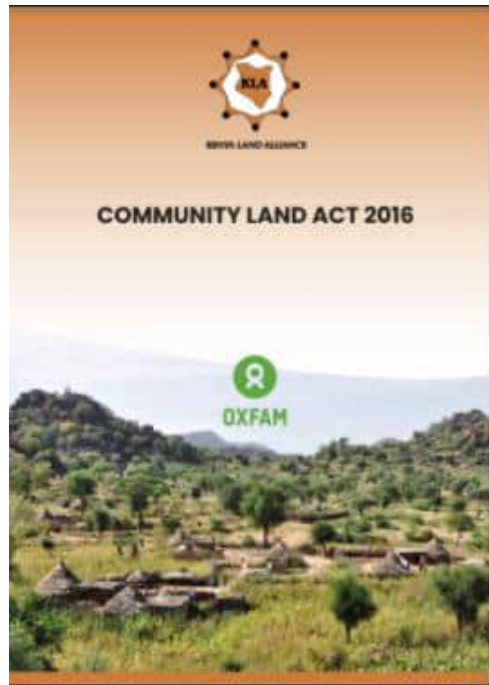
CSOs roundtable in Lodwar Town



Meeting with the CEC for lands in Turkaan County

KRA 3: Knowledge Driven Interventions in the Land Sector

Output 1.2 Information on community land rights and FPIC is shared widely among communities

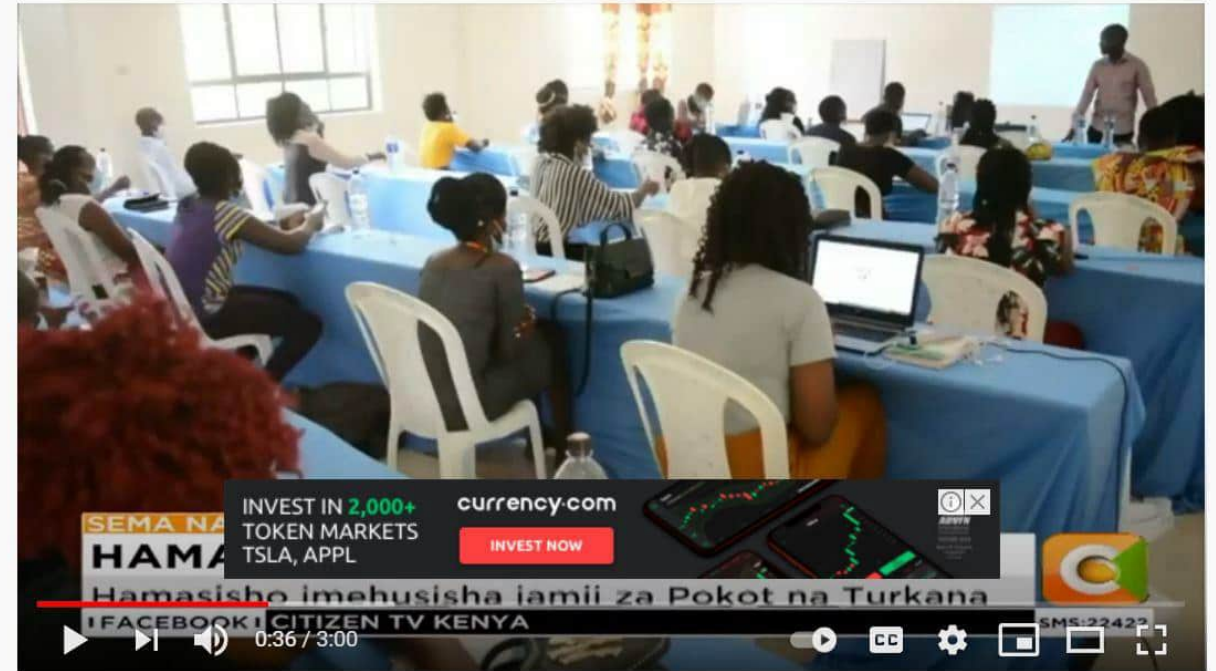


KRA 3: Knowledge Driven Interventions in the Land Sector

- Conducted media interview at the nation media alongside Kenya civil Society Platform on Oil & Gas (KSPOG)
- Published a newspaper supplement with a call for advancing gender equality and empowerment of women, particularly in the area of access to land and resources (March 2019). Policy makers still refer to the information contained therein.
- Commissioned a study which analysed 241,995 HA which are the settlement schemes in Kenya. The study focused on land ownership in settlement schemes using the statistical data provided by the Ministry of Lands and Physical Planning, department of Land Adjudication and Settlement. The study is a resource in various spaces.
- Pamphlet on Environmental Conservation, Climate change, Energy and the Challenge of Charcoal Production -Narok County. This pamphlet simplified information for communities.



Artisanal Miners in Kwale County



Kenya Land Alliance yahamasisha wanahabari kuhusu usajili wa ardhi

Regional Advocacy

OSIEA in collaboration with Defenders Protection Initiative convened a regional forum where we deliberated on the place for Land rights HRDs in Eastern Africa. KLA was called upon to share the various innovative strategies of convening a collective that can sustain an advocacy campaign. Consequently, the convening achieved the following; which KLA's knowledge and expertise contributed to:

- Sharing of knowledge and experiences on land rights issues prevalent in the four Countries represented by bringing in the experiences of affected communities, and also to tying in historical perspectives with contemporary issues.
- Exchanged ideas on the various approaches employed by civil society actors in different countries to counteract pertinent issues of land across the region.
- Developed strategies on how to better support land rights defenders within the bigger space of human rights defenders.

KRA 3: Knowledge Driven Interventions in the Land Sector



REPUBLIC OF KENYA

IN THE HIGH COURT OF KENYA

AT NAIROBI

CONSTITUTIONAL AND HUMAN RIGHTS DIVISION

PETITION NO. 32 OF 2017

KELLY MALENYA.....PETITIONER

VERSUS

THE ATTORNEY GENERAL.....1ST RESPONDENT

CABINET SECRETARY, MINISTRY OF LAND AND PHYSICAL

PLANNING.....2ND RESPONDENT

AND

COUNCIL OF GOVERNORS.....INTERESTED PARTY

JUDGMENT

“Communique with list of demands from the Community Presented to the CS Lands”.

KRA 4; A Robust and Sustainable KLA

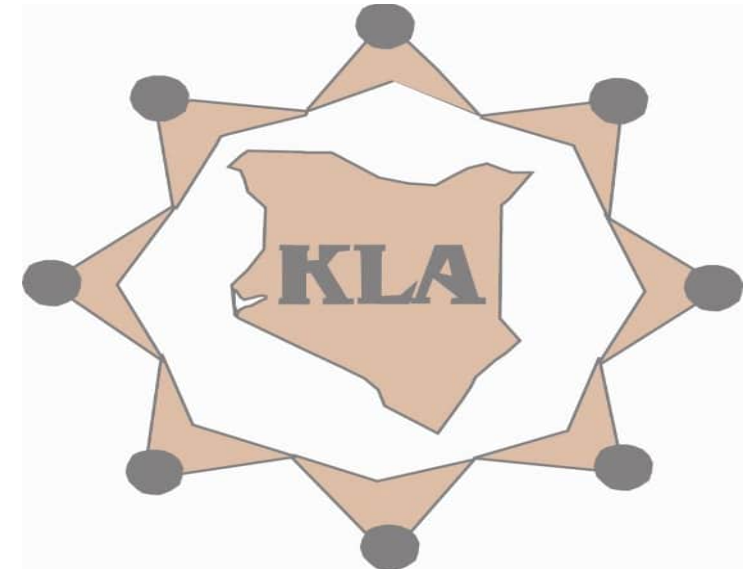
In order to expand our reach we have been able to work with following coalitions / networks/ groups

- ❑ Government officials during the Landesa Engagement. (NGEC, MoLPP, NLC Ministry of Gender)
- ❑ The Women Deliver for good campaign ((Lead, Land thematic area).
- ❑ Haki Madini Kenya
- ❑ Jukwaa la Madini, Mafuta na Gesi
- ❑ The Sustainable Development Goals forum (KLA is the Convenor of SDG 5 working group)
- ❑ The Frontier Counties Development Council (FCDC)
- ❑ The national Assembly Departmental Committee on Lands, environment and natural resources.

- ❑ Indigenous Livelihoods Enhancement Partners.
- ❑ Landesa (Stand for Her Land Campaign).
- ❑ Initiative for Strategic Partnership in Africa (litigation of cases relating to women).
- ❑ Kilimanjaro Initiative (17 organizations)
- ❑ African Development and Communication Network (Femnet).



- KLA Chairs KCSPOG (16 members)
- Member of NES /ILC (12 Members)
- LSNSA (17 members)
- Kenya Tuitakayo (KTM) - 16 members
- LSK - PIL Committee
- Supportive Inclusive Resource Development (SIRD)
- Oxfam GB
- Actionaid International - Kenya





Fair and sustainable conservation: from discourse to action

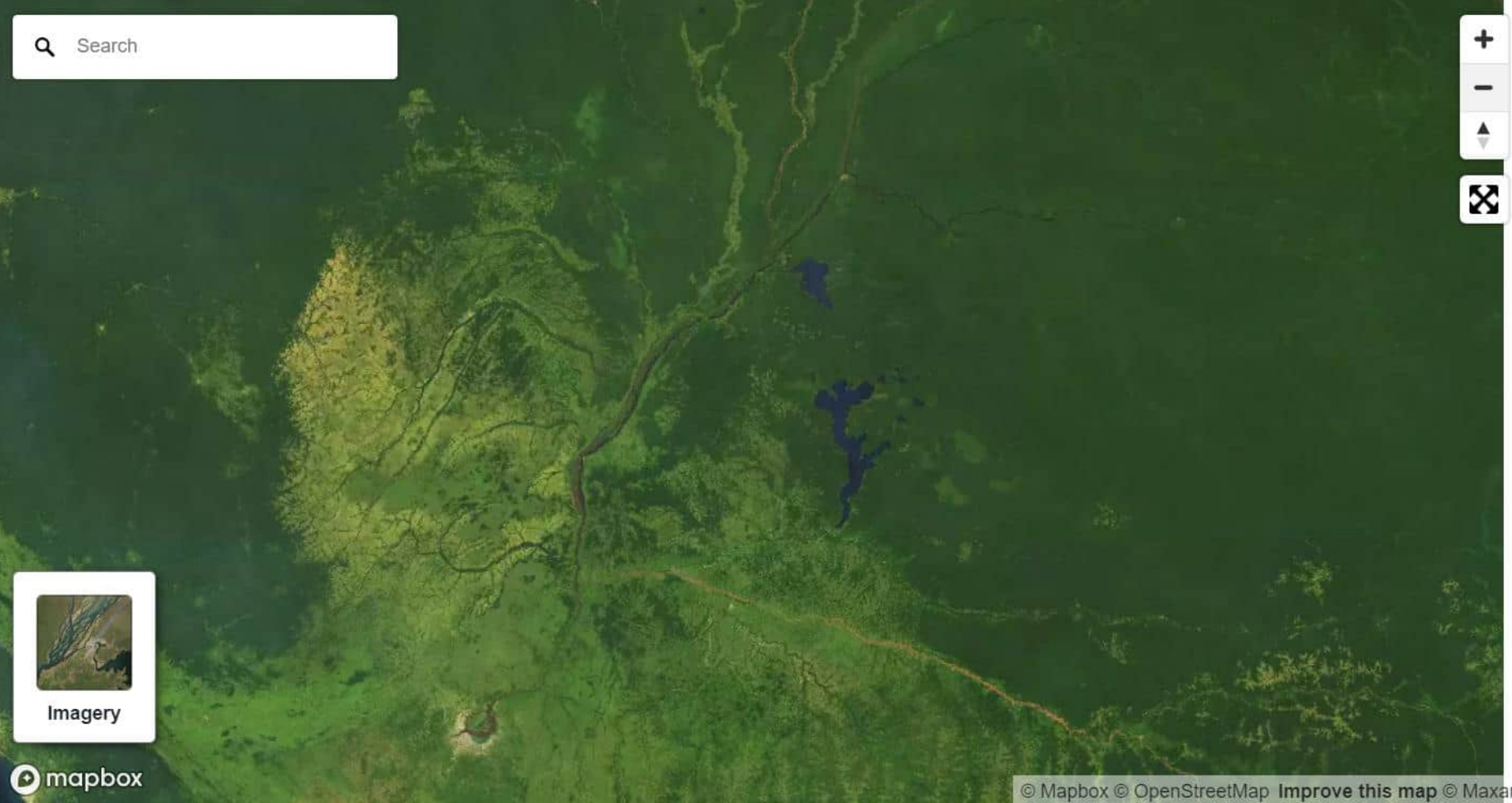
Paths towards globally fair biodiversity conservation
May 2023

The wilderness myth: focus on Central Africa

← → ↻ 🔒 cbca.mappingforrights.org

MAPPING FOR RIGHTS CONGO BASIN COMMUNITY ATLAS
PUTTING COMMUNITIES ON THE MAP

Search



+

-

⬆

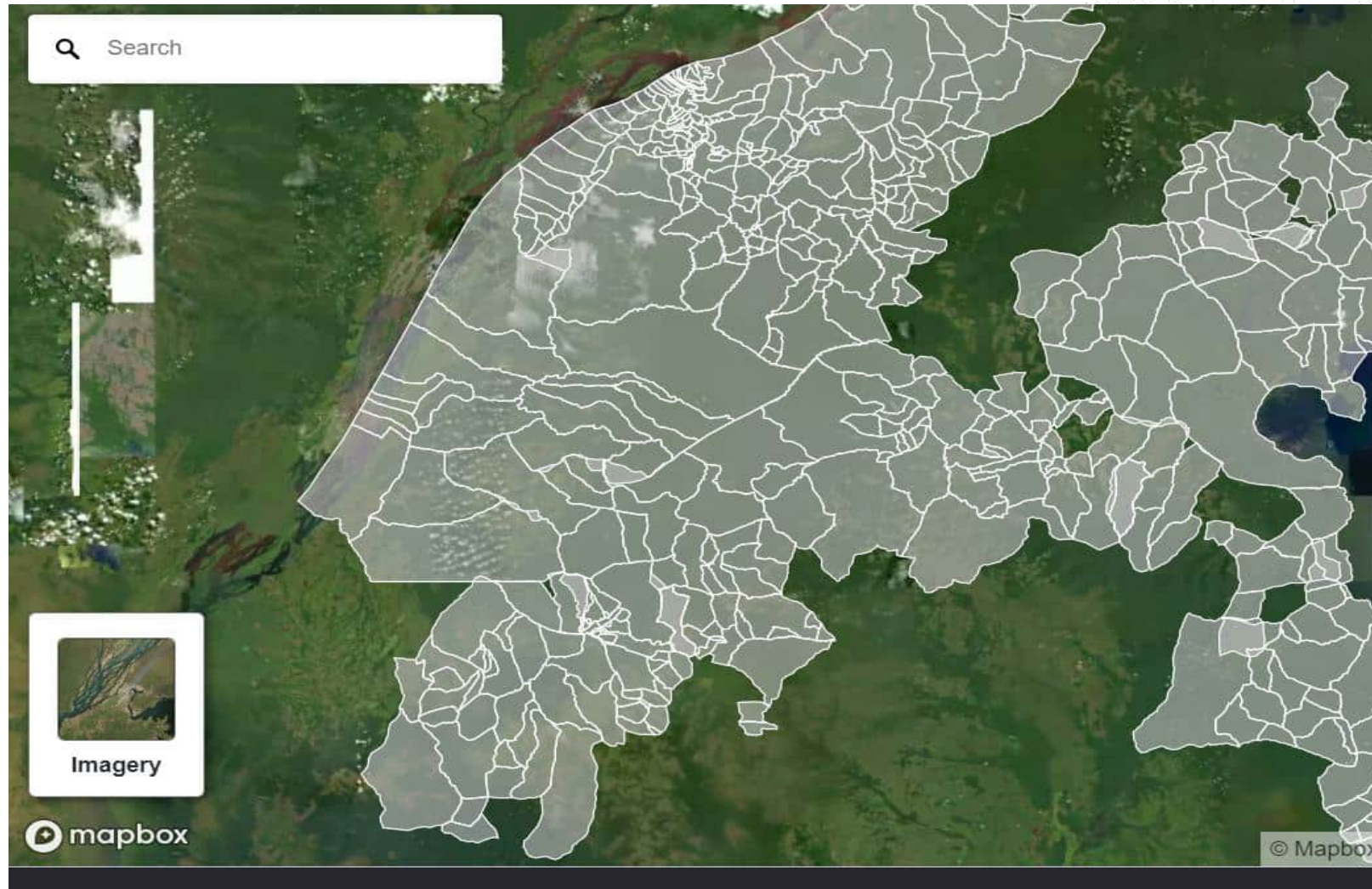
⊗

Imagery

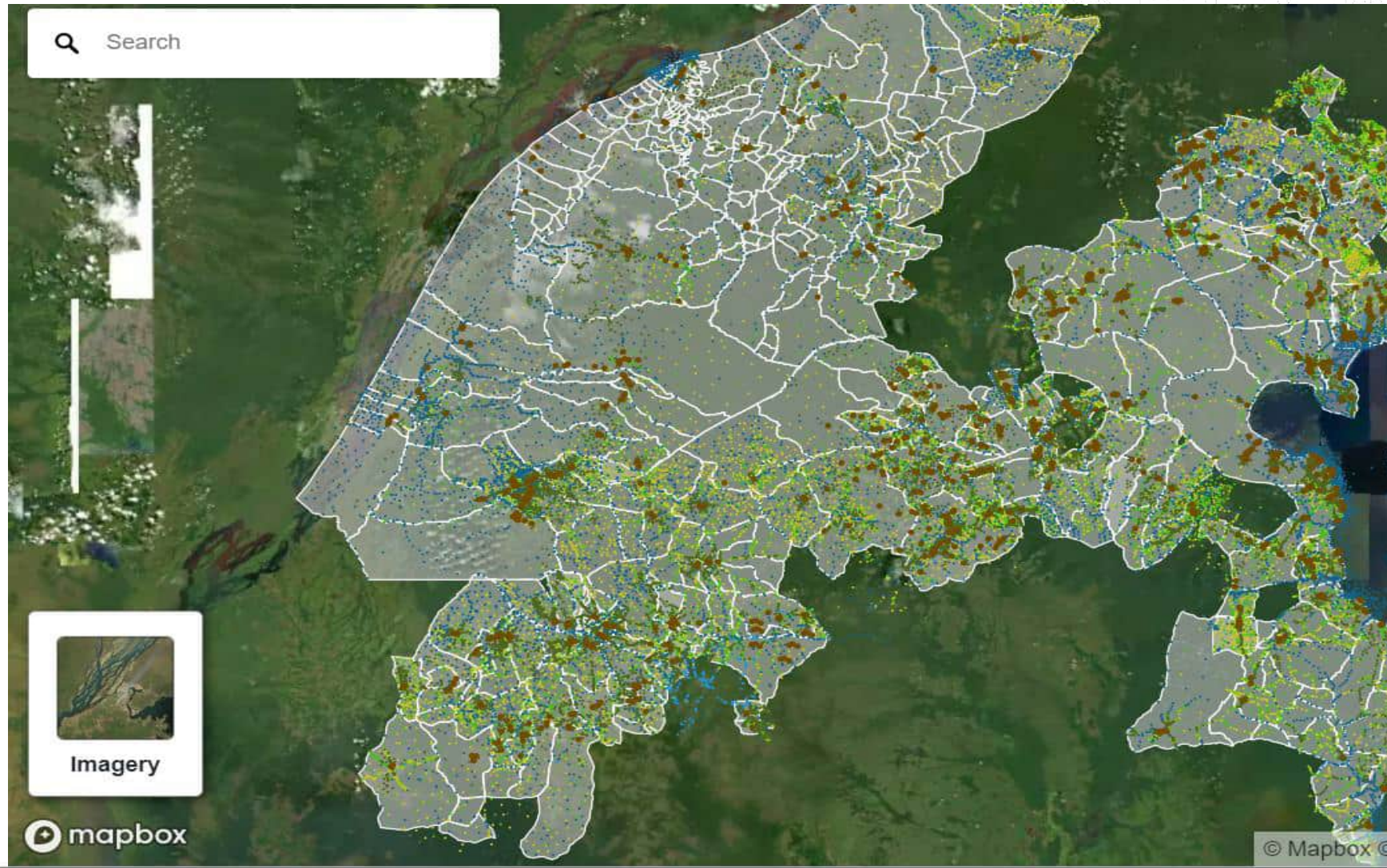
mapbox

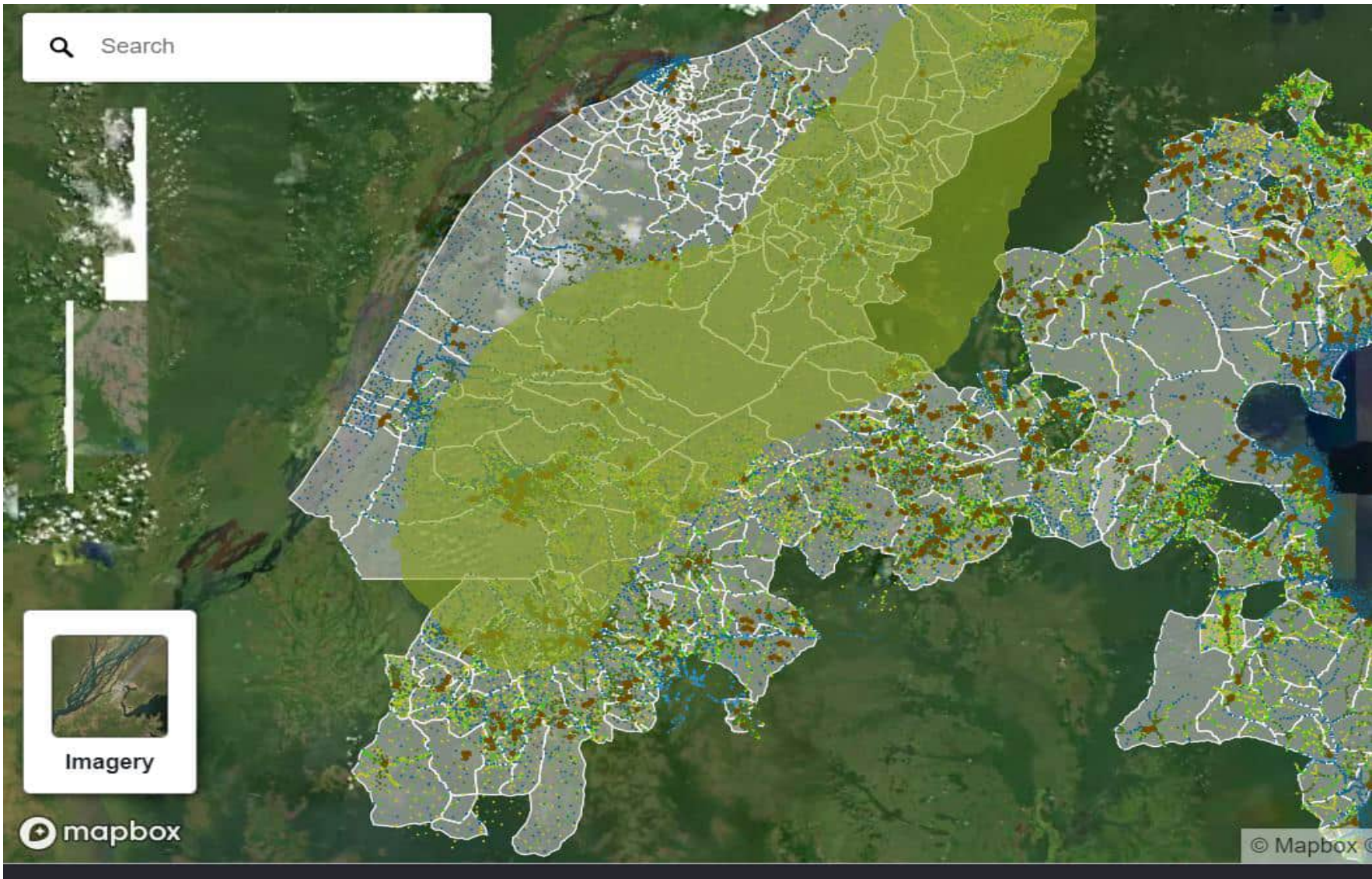
© Mapbox © OpenStreetMap Improve this map © Maxar

What participatory mapping reveals: human territories



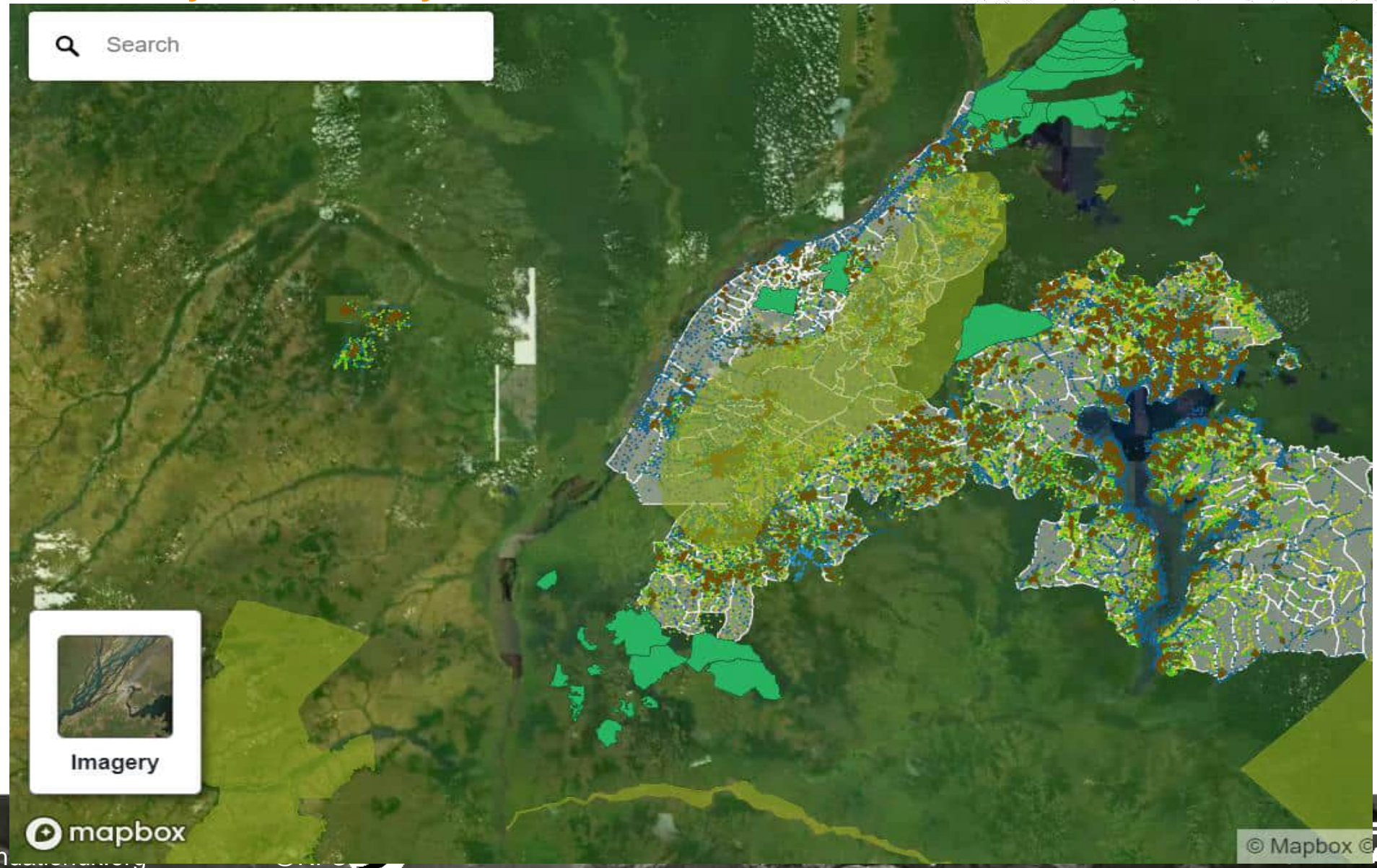
What participatory mapping reveals: diversified livelihoods





RAIN
FOREST
FOUNDATION UK
SECURING LANDS,
SUSTAINING LIVES

Still tenure security is extremely limited



First practical step: participatory mapping

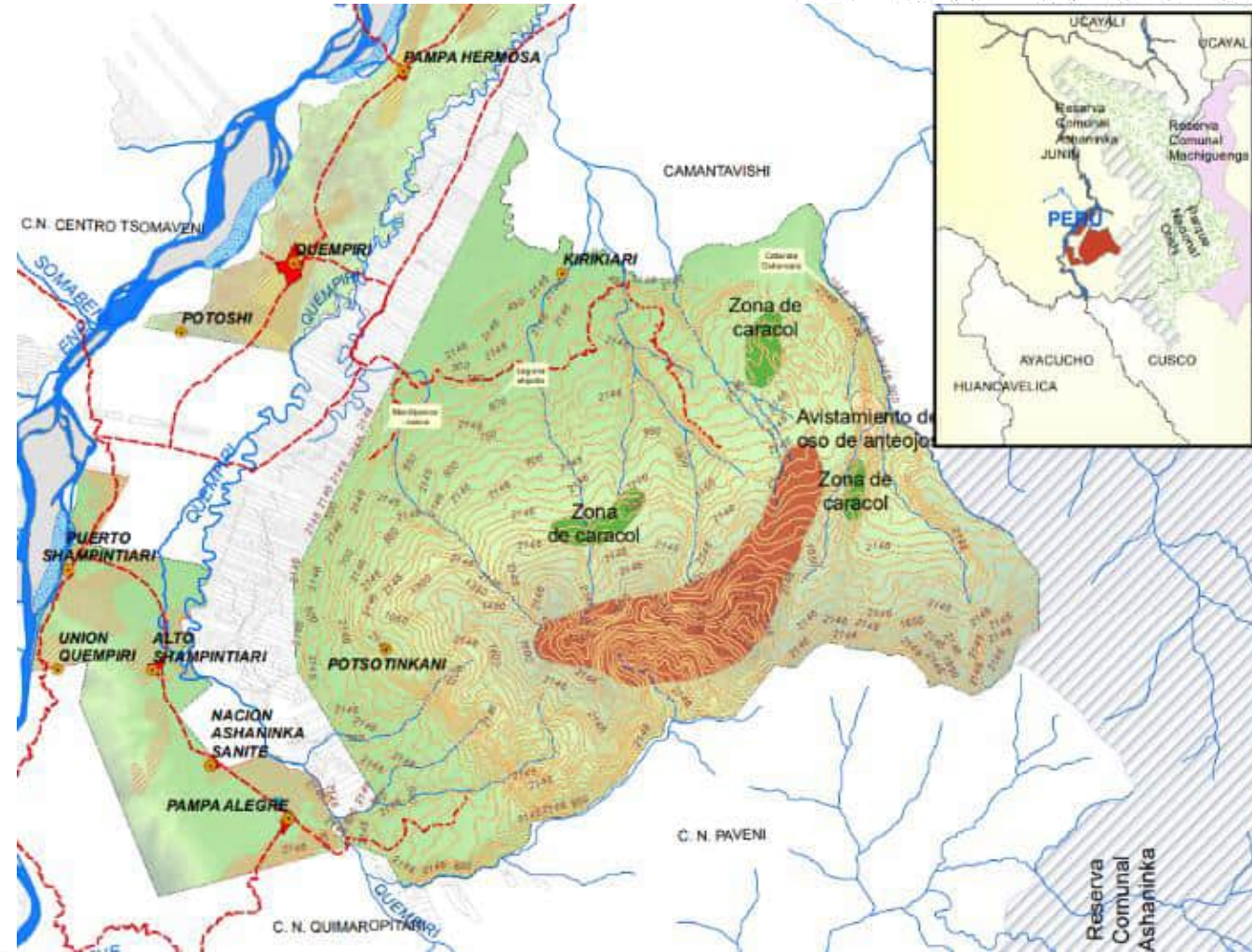
- Map customary territories, understand livelihood and cultural use patterns → build conservation approaches around them



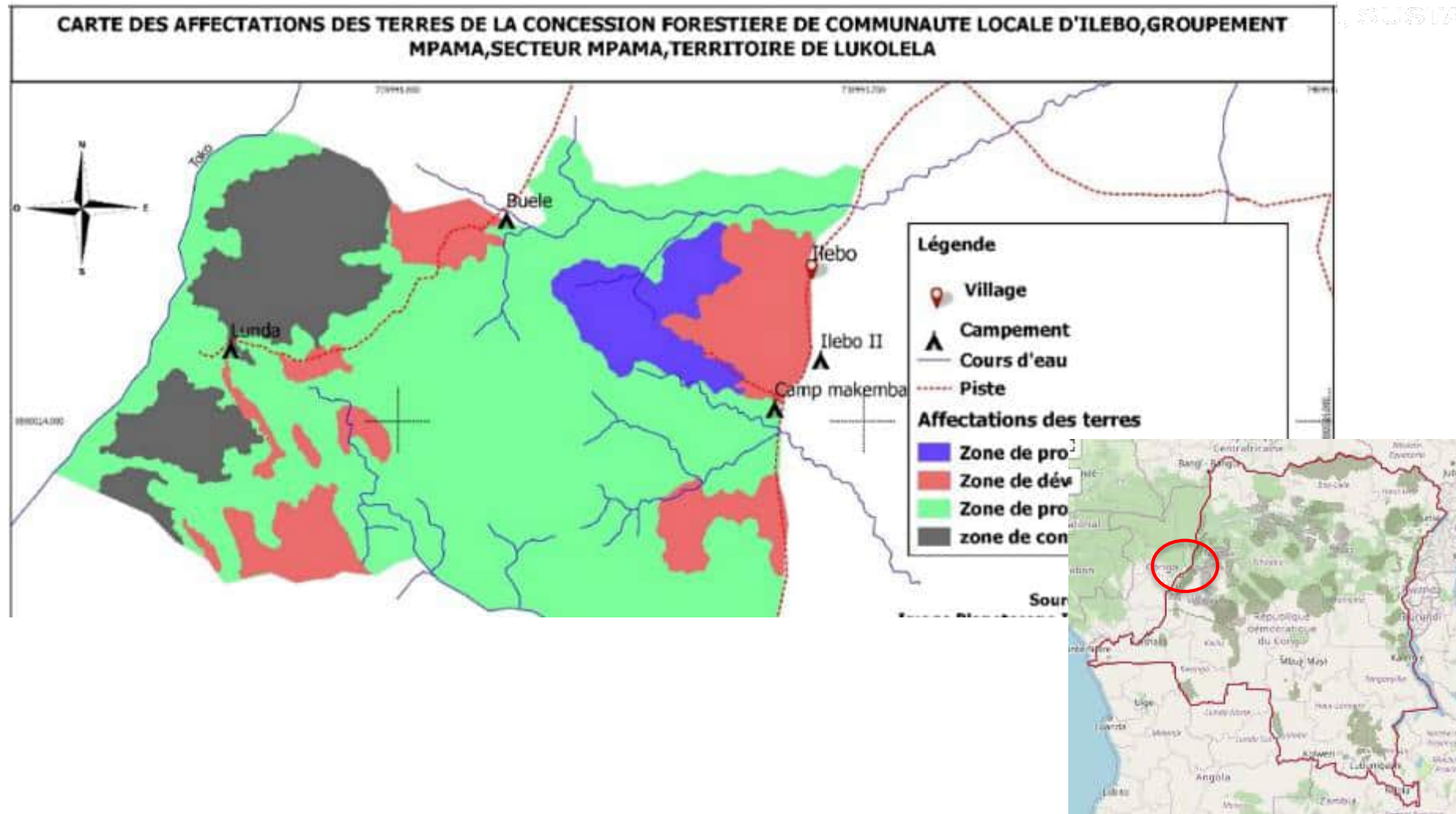
Land use planning: conservation as communal goal



Land use planning: conservation as communal goal



Land use planning: conservation as communal goal

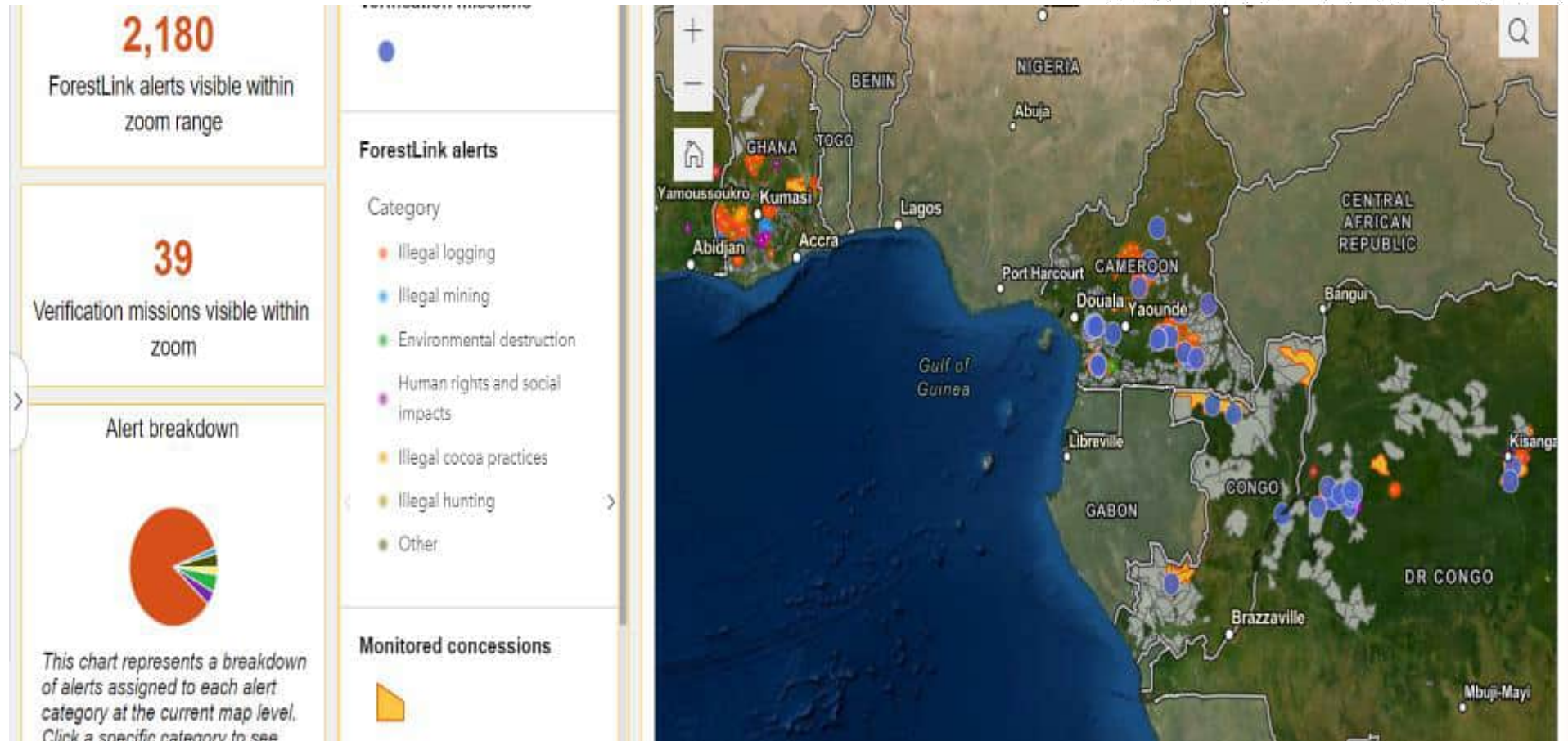


Continuous participation: monitoring



MONITORING > COLLECTION > REPORTING > DATABASE > VERIFICATION > ENFORCEMENT

Continuous participation: monitoring



Community monitoring has myriad applications

Human rights abuses, land rights, poaching, GBV...



Empowered communities require a responsive system

- Grievance and accountability mechanisms
- Resources to respond to complaints and alerts
- Support to survivors
- Practical, financial and **POLITICAL** support to EHRDs



Underlying premise: respecting rights should not be optional

- An end in itself, not a means
- Entitlement, not concession
- Not only “best practice” but an obligation



THANK YOU!



Biodiversitätsschutz

Im Kontext Amazoniens



Klima – Biodiversität und IPLCs





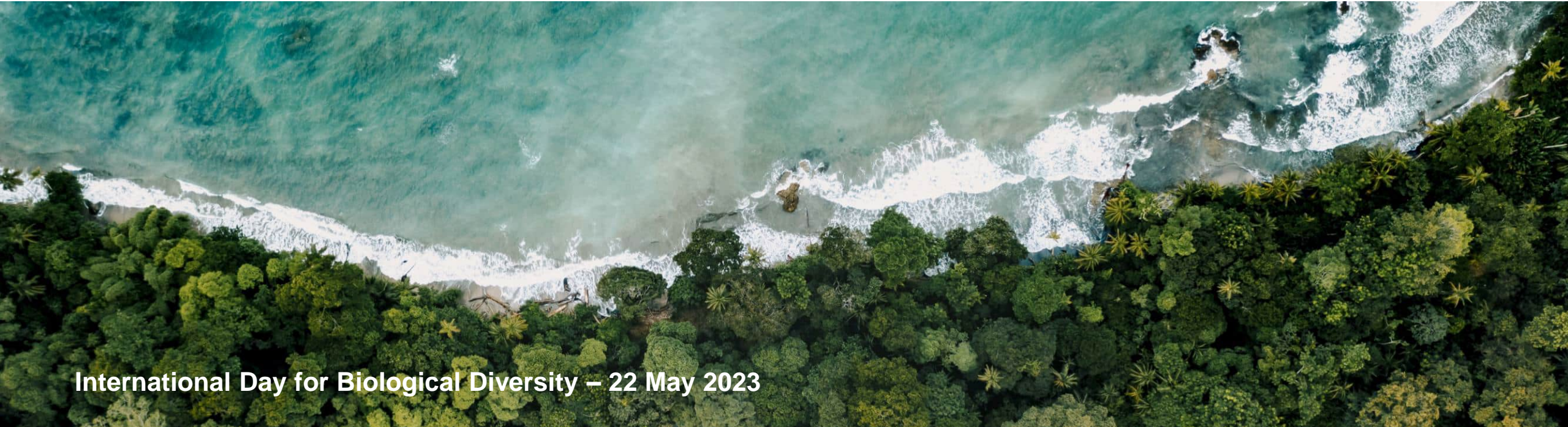
WWFs Position zum CBD Ziel Nr. 3





Lösungsvorschläge der IPLCs





International Day for Biological Diversity – 22 May 2023

Paths towards globally fair biodiversity conservation – implementing the new framework inclusively